

MKRN3 Antibody (Center)
Affinity Purified Rabbit Polyclonal Antibody (Pab)
Catalog # AP5648c

Specification

MKRN3 Antibody (Center) - Product Information

Application	WB,E
Primary Accession	Q13064
Other Accession	NP_005655.1
Reactivity	Human
Host	Rabbit
Clonality	Polyclonal
Isotype	Rabbit IgG
Antigen Region	160-189

MKRN3 Antibody (Center) - Additional Information

Gene ID 7681

Other Names

Probable E3 ubiquitin-protein ligase makorin-3, 632-, RING finger protein 63, Zinc finger protein 127, MKRN3, D15S9, RNF63, ZNF127

Target/Specificity

This MKRN3 antibody is generated from rabbits immunized with a KLH conjugated synthetic peptide between 160-189 amino acids from the Central region of human MKRN3.

Dilution

WB~~1:1000

E~~Use at an assay dependent concentration.

Format

Purified polyclonal antibody supplied in PBS with 0.09% (W/V) sodium azide. This antibody is purified through a protein A column, followed by peptide affinity purification.

Storage

Maintain refrigerated at 2-8°C for up to 2 weeks. For long term storage store at -20°C in small aliquots to prevent freeze-thaw cycles.

Precautions

MKRN3 Antibody (Center) is for research use only and not for use in diagnostic or therapeutic procedures.

MKRN3 Antibody (Center) - Protein Information

Name MKRN3

Synonyms D15S9, RNF63, ZNF127

Function E3 ubiquitin ligase catalyzing the covalent attachment of ubiquitin moieties onto substrate proteins. Acts as a key developmental timer that helps ensure puberty begins at the appropriate age, by inhibiting premature activation of the reproductive hormone cascade. Epigenetically regulates GNRH1 transcription by disrupting the binding of methyl-DNA binding protein 3/MBD3 to the promoter of GNRH1. Mechanistically, mediates the non-proteolytic ubiquitination of MBD3 at multiple sites with 'Lys27' ubiquitin linkages and thereby regulates the methylation status of the genome, including GNRH1 promoter (PubMed:[34692086](#)). Modulates the stability and translation of GNRH1 mRNA by mediating the non-proteolytic ubiquitination of PABP family members PABPC1, PABPC3 and PABPC4 at multiple sites (PubMed:[33744966](#)). Also participates in the maintenance of genomic and epigenomic stability by regulating the abundance of APEX2 via 'Lys-48'-linked ubiquitination (PubMed:[38705397](#)).

Cellular Location

Nucleus.

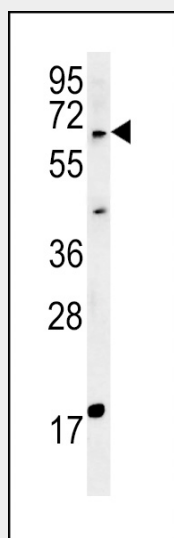
Tissue Location

Ubiquitous..

MKRN3 Antibody (Center) - Protocols

Provided below are standard protocols that you may find useful for product applications.

- [Western Blot](#)
- [Blocking Peptides](#)
- [Dot Blot](#)
- [Immunohistochemistry](#)
- [Immunofluorescence](#)
- [Immunoprecipitation](#)
- [Flow Cytometry](#)
- [Cell Culture](#)

MKRN3 Antibody (Center) - Images

MKRN3 Antibody (Center) (Cat. #AP5648c) western blot analysis in MDA-MB435 cell line lysates (15ug/lane). This demonstrates the MKRN3 antibody detected the MKRN3 protein (arrow).

MKRN3 Antibody (Center) - Background

The protein encoded by this gene contains a RING (C3HC4) zinc finger motif and several C3H zinc finger motifs.

MKRN3 Antibody (Center) - References

Jong, M.T., et al. Hum. Mol. Genet. 8(5):783-793(1999)